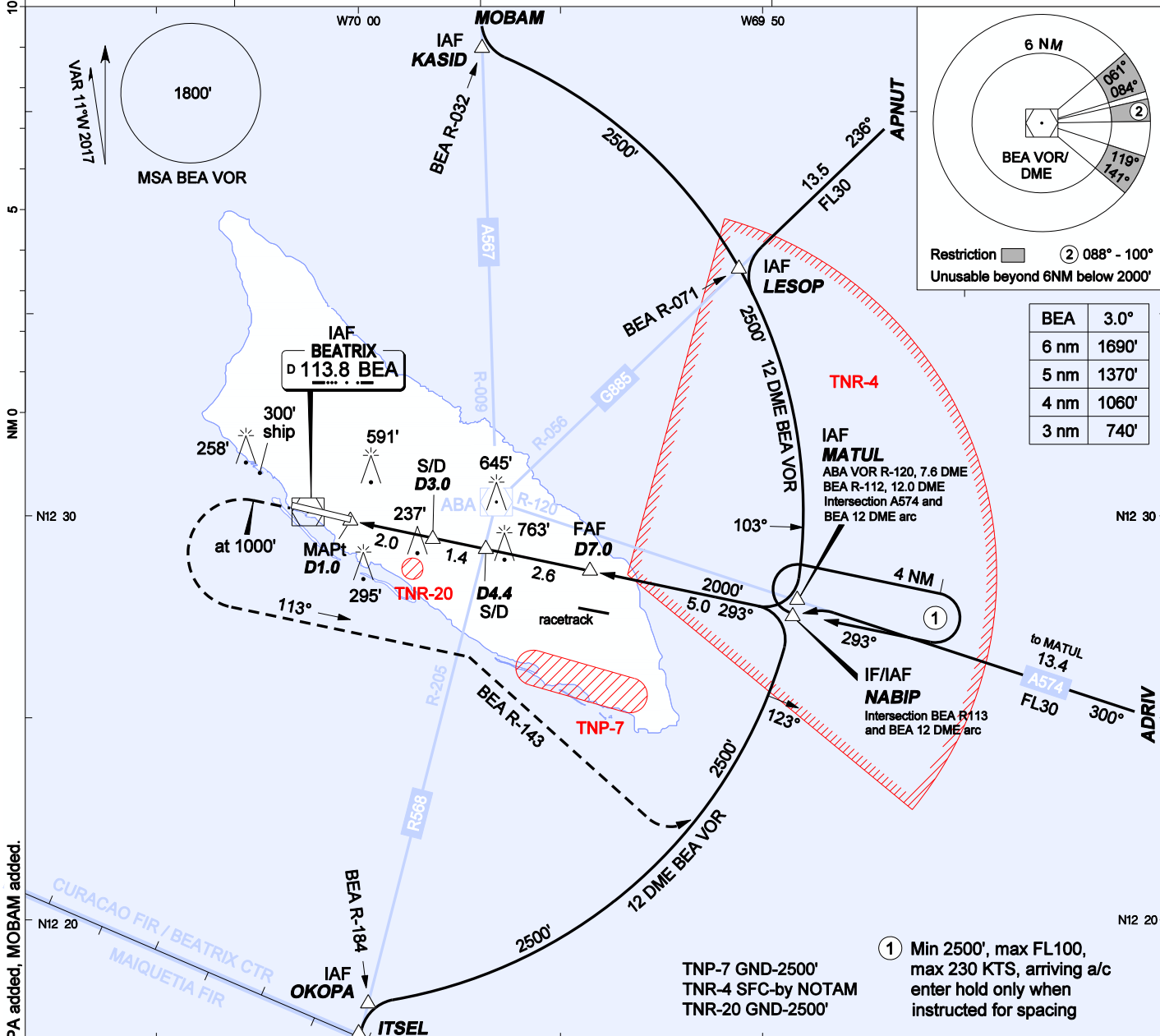


**INSTRUMENT APPROACH CHART-ICAO**

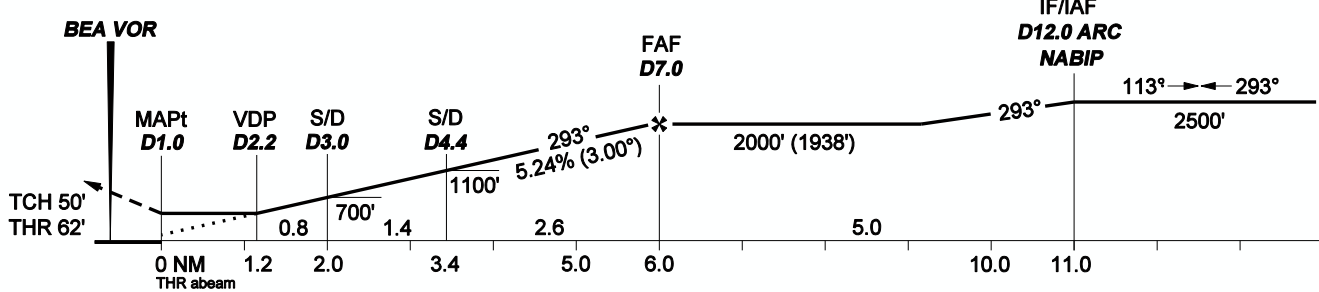
AD ELEVATION: 62'  
TRANS LEVEL: FL 40  
TRANS ALT: 2500' (2438')

BEATRIX:  
APP/TWR 120.9 GND 118.0  
APRON 121.6 ATIS 132.1

**VOR Z RWY 29  
REINA BEATRIX INT'L (TNCA)  
ARUBA**



**MISSED APPR:** Climb on extended centerline to 1000', then turn left climbing to 2500' on course 113°, join BEA R-143, join BEA 12 DME arc and hold or as directed by ATC.



OCA(H)	A	B	C	D	GROUNDSPEED - DESCENT RATE						
					KNOTS	70	90	100	120	140	160
STRAIGHT-IN	490' (428')	490' (428')	490' (428')	490' (428')	FT/MIN	372	478	531	637	743	849
CIRCLING	890' (828')	890' (828')	1160' (1098')	1160' (1098')							

1. TNR-4 is not active during Rwy 29 operations.
  2. Bearings are magnetic. Altitudes, elevation and heights in feet and distance in NM.
  3. Heights are relative to AD elevation.
  4. Visual descent point (VDP) is where straight-in OCA intersects 3° descent slope.
- MAPt D1.0 (abeam THR) N12 29 52.68 W070 00 11.90  
VDP N12 29 37.80 W069 59 00.69  
S/D D3.0 N12 29 28.21 W069 58 14.81  
S/D D4.4 N12 29 10.65 W069 56 50.82  
FAF D7.0 (42,394') N12 28 38.30 W069 54 16.22  
KASID N12 41 22.66 W069 56 55.41  
LESOP N12 36 07.99 W069 50 37.51  
MATUL N12 27 54.09 W069 49 11.13  
NABIP N12 27 35.19 W069 49 14.94  
OKOPA N12 18 08.40 W069 59 42.29

CHANGES: 45/180 procedure turn altitude, BEA radials to KASID/LESOP/OKOPA added, MOBAM added.